



SHEETMETAL COMPONENT MANUFACTURING

Fast Prototyping • Laser Cutting • Laser Marking
Bending • Powder Coating • Welding
Punching • Assembly • Turnkey Manufacturing Solutions

ISO 9001 - 2000 CERTIFIED

8404 Venture Circle - Schofield, WI 54476
715.359.3002 | aplaser.com

Just a Friendly Reminder...

SME can help you if you are looking for a job.
Log on to www.SME.org.

Post an Anonymous Resume

Post your resume online today! Whether you're actively or passively seeking work, your online resume is your ticket to great job offers!

View Jobs

Access the newest and freshest jobs available to professionals seeking employment.

Personal Job Alert

Create Job Alerts and never let a matching job opportunity pass you by! New jobs that match your search criteria will be emailed directly to you.

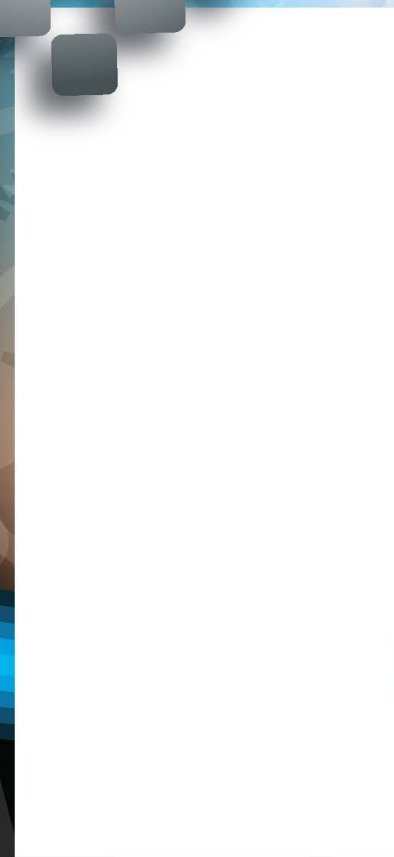
Job Seeker Account - Login / Register

Your personal job seeker account will allow you to find jobs, manage your resumes, and set up job alerts. Get started today!

COVER DESIGN BY: MS GRAPHICS | 715-298-3344

RIB MOUNTAIN
Chapter 269

Society of
Manufacturing Engineers



POSTMASTER:
SME, PO Box 97
Wausau, WI
54402-0097




**Join us for a tour of
ALT Applied Laser Technologies
Thursday, March 22nd**



**Marten
Machining
Inc**
multi-axis quality

6800 Hillcrest Drive
Stevens Point, WI 54482
P: 715.592.5092 F: 715.592.4745

www.martenmach.com



GREENHECK
Building Value in Air.

Greenheck Fan Supports SME Chapter 264
PO Box 410
Schofield, WI 54476
715.359.6171
www.greenheck.com

Below is a list of organizations that support **The Society of Manufacturing Engineers, Chapter 264** by sponsoring and backing our members. We thank you for your generosity.

- | | |
|--------------------------------------|--|
| All Metal Stamping | Marten Machining, Inc |
| Applied Laser Technologies | Norlen, Inc. |
| Centerline Machine | Northstar Steel Fabricating |
| Chippewa Valley Technical College | Northwest Tool & Manufacturing Company, Inc. |
| Crystal Finishing Systems, Inc. | Pointe Precision, Inc. |
| D & S Mold & Tool Co., Inc. | Racine Flame Spray, Inc. |
| Del Monte | Regal Beloit |
| Donaldson | Resilient Technologies |
| E.L. Simeth Co., Inc | Schuette Metals |
| Engrave Itt, LLC | Steel King Industries, Inc. |
| Felker Brothers Corporation | Sterling Water Culligan |
| Greenheck Fan Corporation | Sulzer Machine & Manufacturing |
| Hydratight-Sweeney | Sun Printing |
| Indoff | Techna-Tool, Inc. |
| Karl Schmidt Unisia, Inc. | Tomcor Industries |
| Kolbe & Kolbe Millwork Company, Inc. | Walker Forge, Inc. |
| Linetec | Waukesha Bearing |
| Marquip, Inc. | Wausau EGL Academy |
| Marshfield Door Systems, Inc. | |

**We are sorry if we overlooked anyone,
and would like to thank you for your support also.**

Fox Cities Operational Excellence Association

The Fox Cities Operational Excellence Association (FCOEA) is committed to helping its members strengthen their business and community through knowledge sharing and networking.

Key objectives of this group are to increase Lean and Six Sigma effectiveness through knowledge sharing and networking. Join us for:

- Presentations and round table discussion on specific topics
- Share ideas, resources, lessons learned and frustrations
- Demonstrate practical examples vs. theoretical answers
- Inspiring innovation and transformation results

Free presentations and networking opportunities scheduled every March & October!! Check it out at:

www.fvtc.edu/FCOEA

Engrave Itt LLC.

4803 Shirley Ave.

Schofield, WI 54476

715-573-1810 Phone



www.laserengravedknobs.com

March 22nd

ALT Applied Laser Technologies
8404 Venture Circle
Schofield, WI 54476

SME 2018 Tentative Tour / Seminar Schedule

April – Worth Products
May – Steel King
June – Annual Fundraiser – Golf Outing

SME 2018 Board Meetings

Location: TBD

Future BOD Meeting Dates

March 22nd

2017 Chapter Officers

Chairman

Josh Schmidt
3M
E-mail: jschmidt2@mmm.com

Vice Chairman

Nathan Wilke
3M
E-mail: nwilke@mmm.com

Treasurer

Ashley Stubbe
Greenheck Fan Corp.
E-mail: ashley.stubbe@greenheck.com


Secretary

Melissa Weller
3M
E-mail: mweller@mmm.com

Indoff

*Material Handling Systems
Conveyor, Ergonomic and Storage
Equipment*

(414) 529-4067
Contact Scott Paisley
scott.paisley@indoff.com



TomCOR

INDUSTRIES

7801 International Dr
Wausau, WI
54401

Ph: 715-849-4135 Fax: 715-849-4171
Toll Free: 866-927-2738

RFS

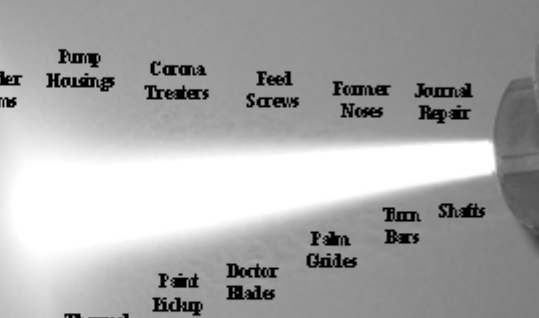
Racine Flame Spray, Inc.

Plasma & Metallizing Specialists

Many materials to suit your needs:

- Metals
- Ceramics
- Cermets
- Cobalides
- Silicones
- Fluoropolymers

... and more



Winder Drums

Pump Housings

Corona Treaters

Feed Screws

Former Noses

Journal Repair

Reel Drums

Carbon Fiber Rolls

Hler Rolls

Water Fan Rolls

Thermal Transfer Rolls

Paint Pickup Rolls

Doctor Blades

Palm Guides

Turn Shafts

Bars

Coatings for many applications:

- Traction
- Wear
- Corrosion
- Release
- Salvage
- Buildup
- Electrical Resistance & Conductivity

... and more

1810 William Street, Racine, WI 53404
Tel: 262-632-1989, Fax: 262-632-0681
e-mail: info@racineflame.com
www.racineflame.com

E.L. SIMETH co., INC.

403 S. HAWLEY RD.

MILWAUKEE, WI 53214 (414) 771-9270

STANDARD COMPONENTS FOR: FIXTURES, DIES, MOLDS,
PUNCH PRESSES & SPECIAL MACHINERY



1800 Grand Avenue
Wausau, WI 54403
Fax: 715.845.4433
Phone: 715.845.4911

CRYSTAL

FINISHING SYSTEMS, INC.

Aluminum Extrusion – Fabrication – Finishing

2610 Ross Avenue

Schofield, WI 54476

715-355-5351 Phone

715-355-8812 Fax

www.crystalfinishing.com

Chairmen of Chapter 264

1979-1980 Larry Piehle	1998 Dan Siebert
1981 Gary Schoenborn	1999 Carl Brown, CMfgE
1982 H. Thomas Jessup	2000 Randy Suchowski
1983 Richard Paulson	2001 Chris Kubacki, CMfgE
1984 Michael Jilek/Jim Seehafer	2002 Mary Freimund, CMfgE
1985 Ken Goetsch, CMfgE, PE	2003-2004 Bruce Bohr
1986 Richard Austin	2005-2006 Gene Schultz, MfgE
1987 Richard Gray, CMfgE	2007-2008 Kristin Meliska
1988 John Peterson	2009 Phil Sheahan
1989 Bruce Paquette	2010 Craig Dreikosen
1990 Carl Brown, CMfgE	2011 Brian Michalowski
1991 Todd Lynn, CMfgE	2012 Robert Newby
1992 Randy Suchowski	2013 Nathan Fetting
1993 Dennis Dettmering, CMfgT	2014 Nathan Fetting
1994-1995 Jim Eberhardy, CMfgE	2015 Bryan Voight
1996 Scott Brode	2016 Theran Peterson
1997 Richard Austin	2017 Scott Gorichs

ADVERTISERS

Applied Laser Technologies
Crystal Finishing Systems, Inc.

E.L. Simeth Co., Inc.

Engrave Itt, Ilc

Greenheck Fan Corporation

Indoff

Marten Machining

MS Graphics

Northwest Tool & Mfg. Co., Inc.

Racine Flame Spray Co.

Sulzer Machine & Manufacturing

Tomcor Industries

Commitees

Membership Recruitment / Re- tention

Bruce Bohr*
Greenheck Fan Corp.
Bus Phone (715) 355-6501
Res Phone (715) 443-3166
E-Mail:
bruce.bohr@greenheck.com

WEBMASTER

Nathan Fetting

CERTIFICATION

Open
Bus Phone
E-Mail:

BULLETIN EDITOR

Josh Schmidt
E-Mail:
jschmidt2@mmm.com

HISTORIAN

OPEN

DIRECTORY

Kristin Meliska*
Greenheck Fan Corp.
Bus Phone (715) 355-6443
Res Phone (715) 355-8021
E-Mail:
kristin.meliska@greenheck.com

SPECIAL ACTIVITIES

Gordon Gorski*
Retired
Res Phone (715) 842-3688

NOMINATIONS

Bruce Paquette*
Retired
Res Phone (715) 675-3980

BULLETIN ADVERTISING

Open

PUBLIC RELATIONS

Open

STUDENT CHAPTER ADVISOR

Open

AUDIT

Open



NORTHWEST TOOL

& MANUFACTURING CO., INC.

2200 N. FOURTH AVE. - WAUSAU, WI 54401

MANUFACTURERS OF:

CUSTOM TOOLING - FIXTURES - GAUGES

DIES - SPECIALTY MACHINES

WIRE EDM

GENERAL MACHINING

CNC MACHINING & TURNING

www.northwesttool.com

PHONE (715) 675-7424

FAX (715) 675-6747



SULZER MACHINE



ISO
9001:2008
REGISTERED

PRECISION MACHINING & FABRICATION

CNC MILLING, BORING BARS & TURNING • VERTICAL BORING MILLS • FIXTURING • FINISHING
TOOLING • WELDING • PROTOTYPING • ON-SITE MACHINING & WELDING
BLANCHARD GRINDING • CYLINDRICAL GRINDING
REVERSE ENGINEERING • CNC & PORTABLE CMM INSPECTION • 3D MODELING

2475 SPRING BROOK RD, MOSINEE WI 54455

PHONE: (715) 443-2569 FAX: (715) 443-2386

WWW.SULZERMACHINE.COM

SULZER@SULZERMACHINE.COM

Board of Directors Minutes February, 20th 2018

Call to Order:

Josh Schmidt called to order the meeting at 12:20 pm @ The Bar, Wausau.

Roll Call:

The following person(s) were present: **Scott Gorichs, Josh Schmidt, Bruce Bohr, Melissa Weller, and Ashley Stubbe.**

Tour Updates:

February – Expera Specialty Solutions—Good tour, excellent food

Current Business:

1. Topic: Advertising
Discuss: An advertising chair is needed to help lead the advertising of the group. By moving to an electronic bulletin we may be able to offer different types of advertising as we have had in the past.
2. Topic: Historian
Discuss: The club has a boxes of old bulletins and photos that need to be stored/electronically documented. With moving to a new bulletin format there would be the opportunity to add photos from tours to the bulletins and document the history of the group. Adding member spotlight, and milestone anniversaries was also discussed.
3. Topic: Volunteer Opportunities
Discuss: Ashely is exploring opportunities for volunteering with the Boy Scouts, she will follow up to find out more about what the opportunity entails and we can include an announcement in the bulletin when we know more.
4. Topic: Printing Bulletins vs. Email Bulletins
Discuss: Most members are ok with receiving electronic bulletins. Melissa looked into the cost at Office Max to make mailed copies for those who prefer the mailed copy. The hope is that this will free up additional funds to be used for furthering the manufacturing knowledge and excitement of the youth in our area.
Action: Scott and Bruce will follow up with members who prefer the electronic copy.

2. Adjournment:

Josh Schmidt adjourned the meeting at 12:55 pm. All seconded it.

SME Chapter 264 Event Information

Event: ALT Applied Laser Technologies

Address: 8404 Venture Circle
Schofield, WI 54476

Tour Date: Thursday, March 22nd **Tour Time:** 3:30pm

****NOTE: For respect of our host, please refrain from attending this month's tour if you are actively employed in a contract shop for sheet metal fabrication.**



Continued on next page: Meeting and Dinner

SME Chapter 264 Event Information

Meeting and Dinner

Dinner & Meeting: Sam's Pizza
5811 Business Highway 51
Schofield, WI 54476

Dinner Time: about 5:00pm **Cost:** \$20.00 Members
\$25.00 Non-members
\$15.00 Students/Retirees

Registration By: **Monday, March 19th**

For phone-in reservations, call Kristin Meliska at (715) 355-6443. Please leave a message. You may also RSVP through e-mail at kristin.meliska@greenheck.com.

*If you register for the event and are unable to attend, please notify Kristen Meliska immediately. SME will bill you for unpaid registration costs, unless a cancellation notice is received in time for us to avoid an expense.

* SME is committed to persons with disabilities. Contact Kristin Meliska if such accommodations are required.



ALT is extremely good at laser cutting, punching, bending, robotic bending, PEM insertion, TIG welding, MIG welding, robotic welding, spot welding, stud welding, assembly, powder coating, quality inspection, trouble shooting, packaging and shipping our customers' products. However these things are a given. The efforts we put into our continuous improvement programs helps us to constantly excel in these areas.

ALT has 2 Salvagnini fiber laser with auto load tower systems, and a Bystronic CO2 laser for thick material.

ALT has four press brakes and two panel benders. The two Salvagnini panel benders form parts robotically:

ALT offers welding and finishing services in addition to the other fabrication services. Areas of expertise include robotic MIG & TIG welding, spot welding, press welding, butt welding, "T" welding, and stud welding. A 6-Axis Welding Robot we can consistently weld complex assemblies. ALT is capable of spot welding aluminum to Military specifications.

The welding department processes carbon steel, stainless steel, and aluminum. Assemblies weighing up to 10,000 pounds can be welded.

ALT provides many levels of assembly and packaging up to turn-key machines.

An example of this service can be seen on the front of our building. The image you see uses no paint. It was developed from an idea and was made possible by a manufacturing method developed by ALT staff. This development helped our customer double the size of their business.

